



What should I already know?

- Where Expressionism lies in relation to other artistic schools such as Realism and Cubism and how it differs
- Name some emotions and link them to colours ie often red represents anger
- How to use blending and texture with paint to create an effect

Edvard Munch 1863 - 1944

Munch is considered to be a father of Expressionism which means that he started it. Munch was Norwegian and was born in 1863. He had a very sad childhood as his mother and sister died and his father was very unwell. His painting was influenced by Vincent van Gogh whose use of colour and painting style he copied. Munch reported that he spent most of his life feeling anxious and he tried to show this in his art. He died at the age of 80. His work now hangs in some of the greatest art galleries in the world.

The Scream Edvard Munch

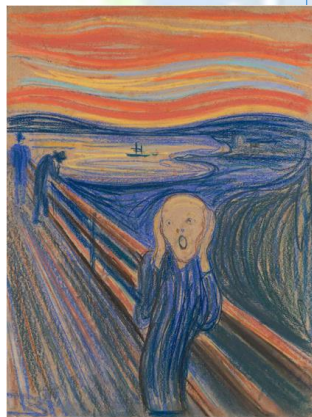
Locations: two are in the National Gallery of Norway and the Munch museum in Oslo **Created** initially: 1893

Periods: Expressionist

Created in: 2 painted versions and two in oil pastels

Munch said this about where the idea came from:

I was walking along the road with two friends – the sun was setting – suddenly the sky turned blood red – I paused, feeling exhausted, and leaned on the fence – there was blood and tongues of fire above the blue-black fjord and the city – my friends walked on, and I stood there trembling with anxiety – and I sensed an infinite scream passing through nature.



What will I know by the end of the unit?

- Who Edvard Munch is and to be able to recognise his work
- Explain what Expressionism is and link emotions to art
- Be able to use colour and texture to convey emotion
- Describe the advantages of oil pastels over other mediums



Self portrait Edvard Munch 1919

Challenge, Commit, Conquer and Celebrate

At St White's Primary School, in art we commit to expressing our creative skills and imagination through art. We study art to celebrate self-expression, creativity and a sense of individual identity.

Expressionism

Expressionist art presents the world subjectively: the artists are trying to show emotion, and how things make them feel, rather than reality and what is actually there.

Blue Horse
Franz Marc
1911



Castle and Sun
Paul Klee
1928



Woman in a Green Jacket
Auguste Macke
1913



Technical vocabulary

Expressionism	A style of art where emotion is portrayed rather than reality. Mostly used to refer to 20 th century artists.
Emotions	Feelings that people have
Interpretation	The way you look at things, not necessarily the truth
Oil pastel	Crayons that are made with oil and wax that can behave, and give a finish a bit like oil paints.
blend	mix
Heavy and light pressure blend	Blend depending on how hard you press with the pastel
Stipple	Use spots of different colours to blend
Scumble	Use short curved lines of different colours to blend
Scraffito	Layer colour and scrape off layers to create a design
Pressure blend	Put colours side by side and rub off gently with a cloth to create a smooth finish



Anxiety
Munch 1894

Melancholy
Munch 1896



Two Human Beings, the Lonely Ones
Munch 1896