



What should I already know?

- An awareness of the past and the passing of time.
- Understanding similarities and differences between different ways of life in different periods.
- Understand how to find out about the past and the different ways of representing it.

Historical skills and enquiry

- Understand how, when and why the Industrial Revolution began.
- Understand that The Forest of Dean played a significant role in the revolution
- Learn about life as a miner
- Understand the developments in technology and how this impacted the revolution
- Understand how to revolution changed the Forest of Dean
- Learn about key figures throughout the Industrial Revolution in the Forest of Dean

The Industrial Revolution

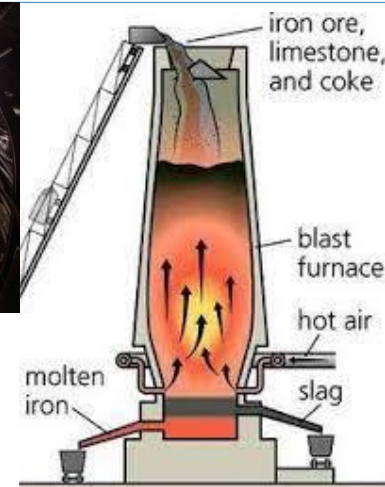
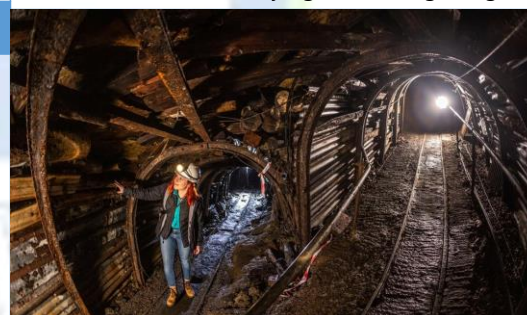
- A period of huge change in Britain between 1750 and 1900.
- Before the Industrial Revolution, Britain was a rural country, most people lived off the land with livestock.
- People began to realise that coal and steam could be used to power factories, large machines, flour and cotton mills. This reduced the time it took to make something and increased the amount that could be made and so the Industrial Revolution began.
- Huge factories were built and towns expanded.
- People would migrate to the towns attracted by reliable work and pay from the factories.
- Houses for workers were built closer to the factories.
- Better transport links helped boost trade by transporting people and goods quickly and cheaply all across the country.

The Industrial Revolution and The Forest

- Before the revolution, the Forest was used by the king for hunting and keeping his animals- people did not live in the Forest
- The Forest had excellent resources in timber, iron and coal
- Because of these resources, it became a large mining are, first in iron and later in coal
- Men who were born in the Forest were allowed to be Freeminers, they lived in huts they built on the edge of the Forest and mined the land
- The freeminer's rights were taken away and the king began to rent out the mines
- Children worked in the mines until a law forbid them from doing so
- Schools and houses were built for the miners in the forest- this is how we live here today
- Nelson ordered the forest to plant more trees to build his boats
- The first steam train was built and the Forest was able to transport the iron and coal around the country

Technical vocabulary

Industry	A group of companies that all produce the same thing.
Industrial Revolution	A time of major change in the way products were made.
Invention	A new thing that someone has made.
Reign	To control a country
Rural	The countryside.
revolution	A big change in something.
Manufacture	To make something on a large scale using machinery.
Trade	Buying and selling things



BC (Before Christ)					AD (Anno Domini)																			
					500 AD					1000 AD					1500 AD					2000 AD				
0																								
Century		1st	2nd	3rd	4th	5th	6th	7th	8th	9th	10th	11th	12th	13th	14th	15th	16th	17th	18th	19th	20th	21st		
Periods in British History		Romans in Britain 55BC – 410AD				Saxon and Viking Britain 410AD – 1066AD					Medieval Britain 1066AD – 1485AD					Tudor Britain 1485AD – 1603AD		Stuart Britain 1603AD – 1714AD		Georgian Britain 1714AD – 1837AD		Victorian Britain 1837AD – 1901AD		Living history